



Photo: Interstage, Project: Concert at Sea, The Netherlands

## SYSTEM DESCRIPTION

The Space Roof is a modular roof system based on a space frame structure. The roof can be suspended from standard Prolyte CT towers. The aluminium profiles combine with special node points to create a roof structure of any desired size or shape. The Space Roof can be built up to 37 x 22 m in size. The specially designed top canopy guarantees efficient water drainage.

Due to the complexity and size of the Space Roof, quotations are made on request only, allowing us to match your requirements with the possibilities this system offers.

## STRONG POINTS

- Modular roof system, modular sizes possible
- Extremely high load-bearing capacity
- Efficient transportation due to very compact transport volume (approx. 1/6<sup>th</sup> of a comparable truss roof)
- Integrated rigging points
- Safe and easy rigging access due to 2 m high frame and 8 cm wide profiles

- Measurements comply with standard scaffolding systems
- Stage sub-structure needs minimum amount of diagonals, allowing for easy creation of corridors underneath

## BASIC STRUCTURE

Towers - C52T  
Grid - Space frame

## INCLUDING

- Tension gear and steel wires
- Structural report according to DIN 4112 / EN13814 C
- Ballast solution
- Rain gutter at front side

## ROOF STRUCTURE

Towers	C52T
Main grid	Space frame in a matrix size of 2072 x 2072 mm

## TECHNICAL SPECIFICATIONS - Space Roof

Dimensions	37 x 22m, 31 x 20m, 31 x 16m other sizes on request
Loading capacity (UDL)	max. 30000 kg
PA loads	Additional PA load near front tower 4000 kg per side
Total self weight	approx. 35000 kg (max. size)
Max. wind speed	36,9 m/second, 82,5 mph

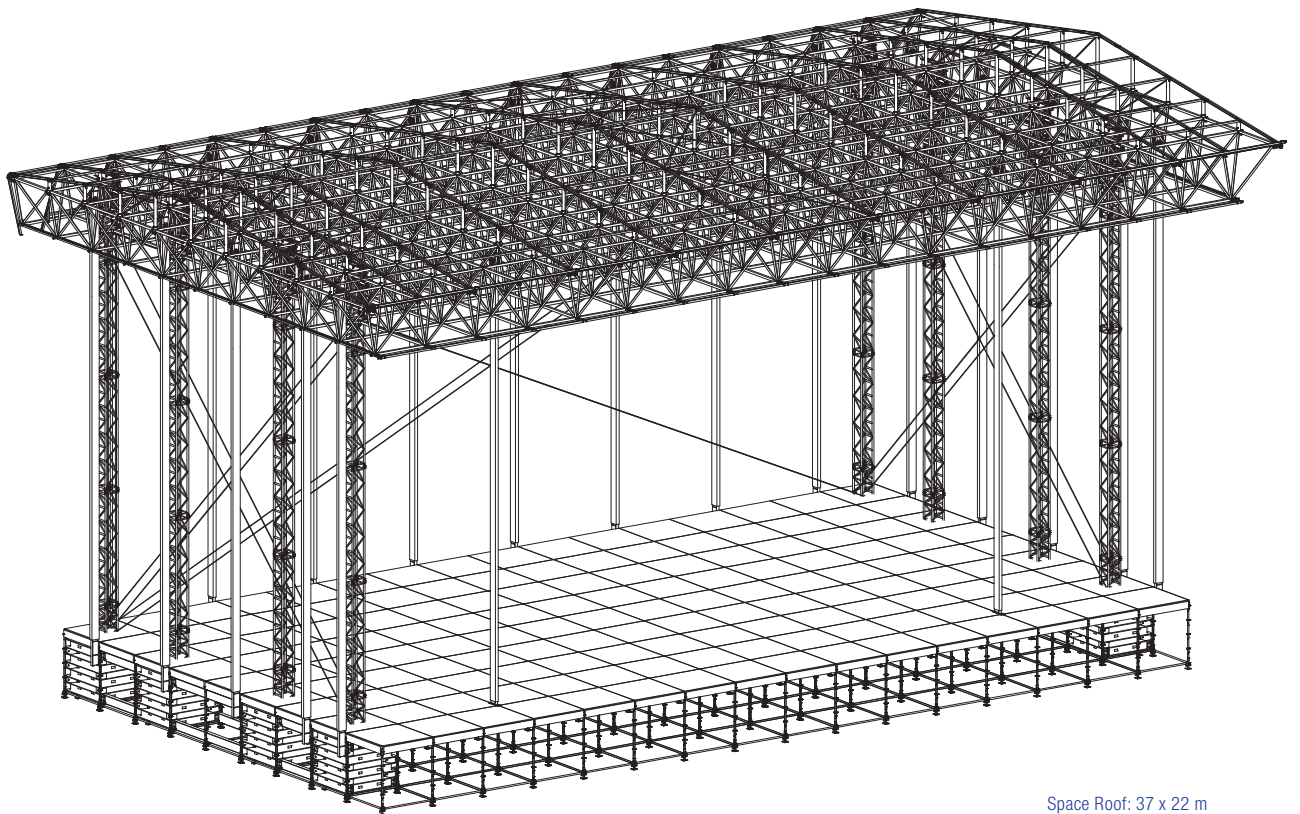
## OPTIONS

Canopy	Top, sides and back
Canopy colour	Standard: outside grey, inside black (other colours possible)
Soundwings	Optional, not included
Ballast	90 Tons
Staging	Layher scaffolding stage combined with Probeam
ProLyft hoist 2000 kg	8-16 x PAE-1000DC-1235/PAE-1000LV-1235 + load cells, depending on size and version
Comprehensive building manual	yes





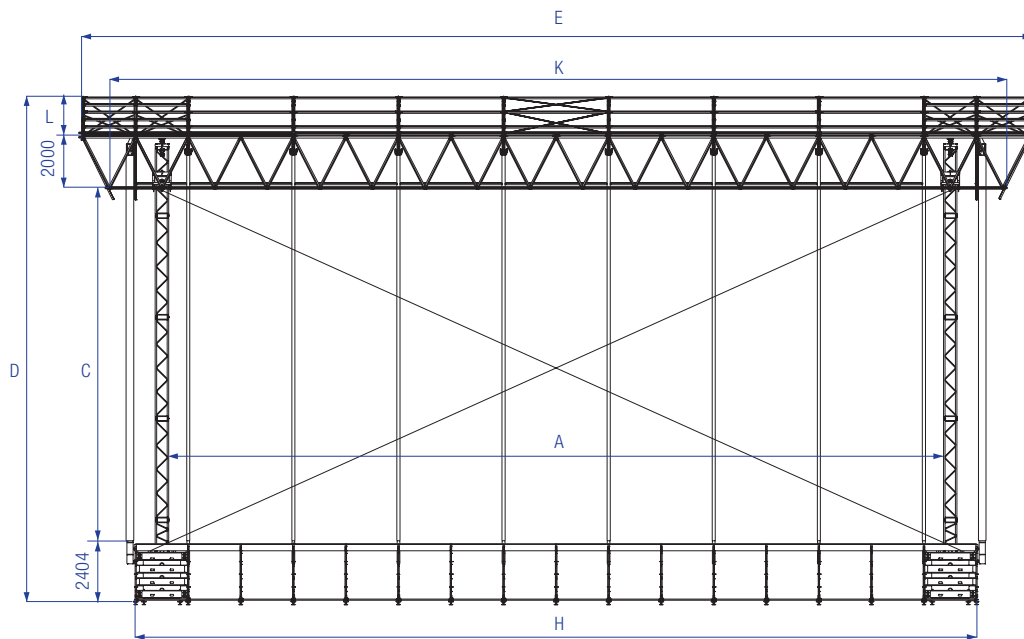
Photo: Starlight, Gothenburg



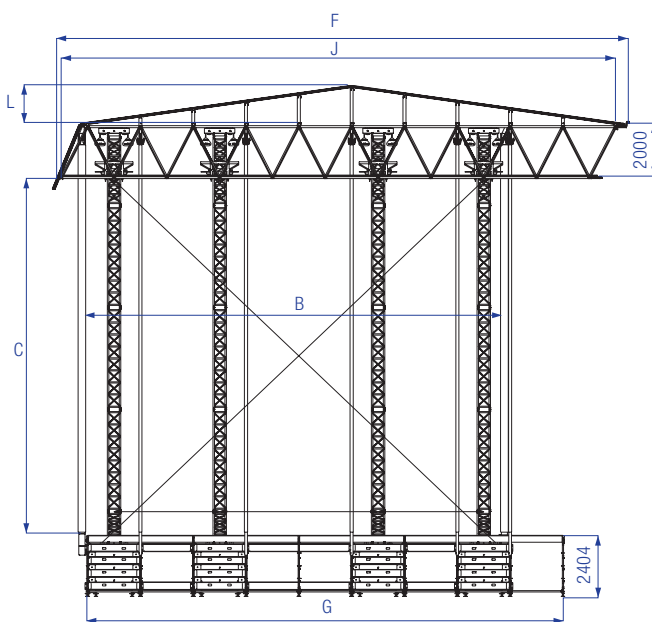
Space Roof: 37 x 22 m

# SPACE ROOF

Front view



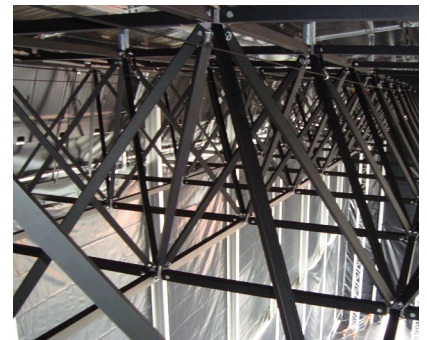
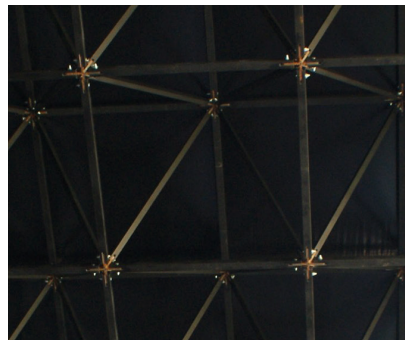
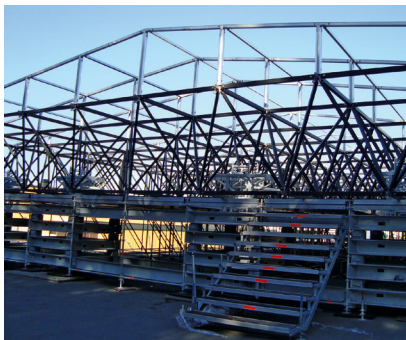
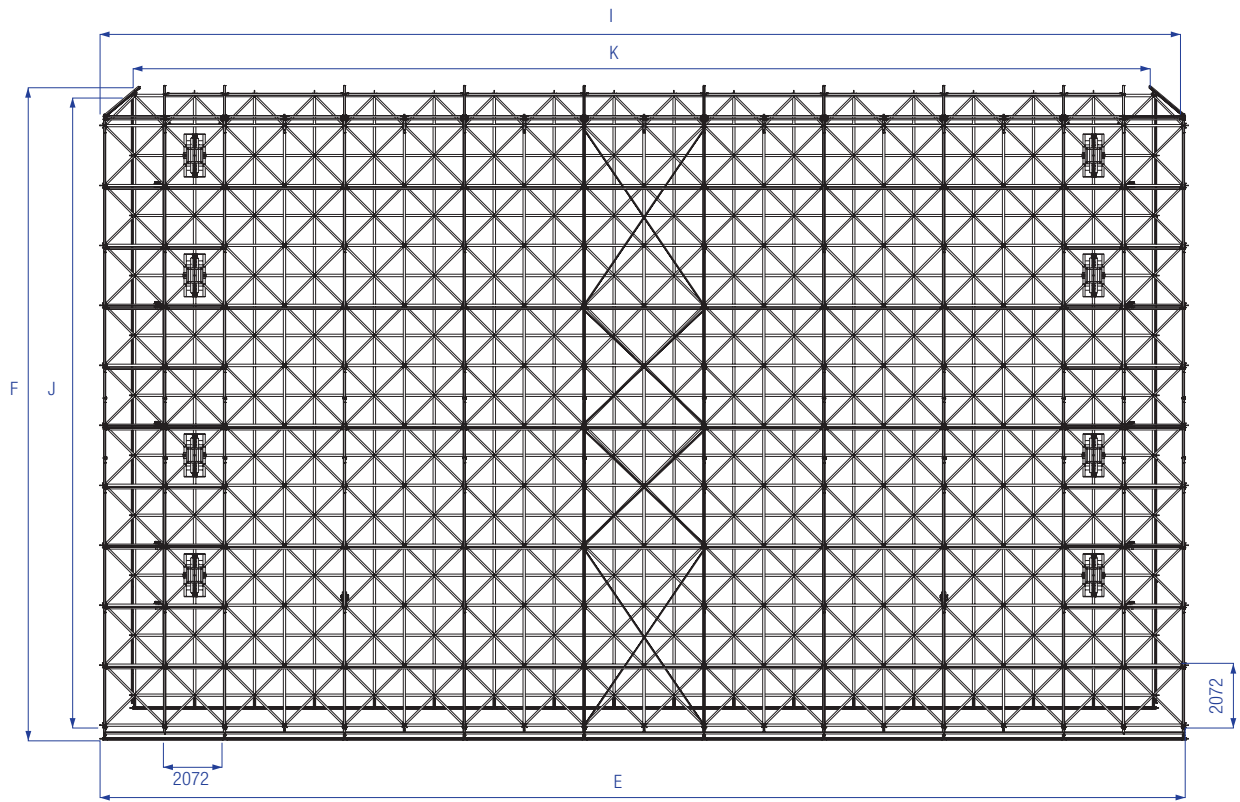
Side view



Space Roof SYSTEM		Inside						Overall					
Stage measurements		A		B		C		D		E		F	
37 x 22 m	121'4" x 72'2"	30,55 m	100'2"	16,59 m	54'4"	14,00 m	45'9"	20,06 m	65'8"	37,65 m	123'5"	22,62 m	74'2"
31 x 20 m	101'8" x 65'6"	24,33 m	79'8"	14,20 m	46'6"	10,00 m	32'8"	15,91 m	52'2"	31,44 m	103'1"	20,54 m	67'4"
31 x 16 m	101'8" x 52'5"	24,33 m	79'8"	10,06 m	33'0"	10,00 m	32'8"	15,91 m	52'2"	31,44 m	103'1"	16,40 m	53'8"



### Top view



Space Roof SYSTEM		Floor		Grid				Pitch roof					
Stage measurements		G		H		I		J		K		L	
37 x 22 m	121'4" x 72'2"	18,65 m	61'2"	33,15 m	108'8"	37,30 m	122'4"	21,76 m	71'4"	35,22 m	115'6"	1,57 m	5,2"
31 x 20 m	101'8" x 65'6"	16,58 m	54'4"	26,94 m	88'4"	31,08 m	101'9"	19,68 m	64'6"	29,01 m	95'2"	1,43 m	4'7"
31 x 16 m	101'8" x 52'5"	12,43 m	40'8"	26,94 m	88'4"	31,08 m	101'9"	15,54 m	50'9"	29,01 m	95'2"	1,14 m	3'7"





Space Roof, photo: Interstage, Project: Zwarte Cross, The Netherlands



